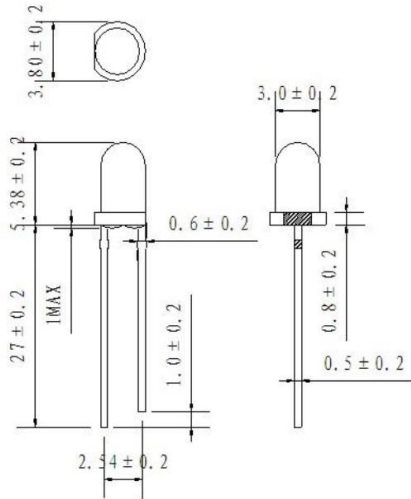


Package Dimension:



Absolute Maximum Ratings at Ta=25

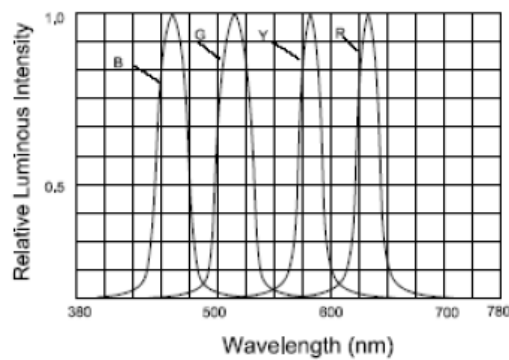
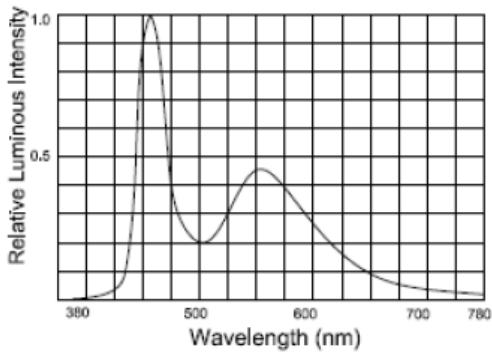
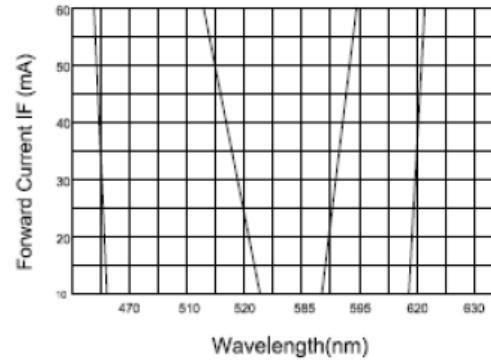
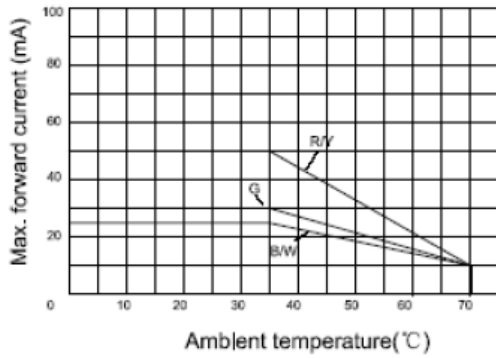
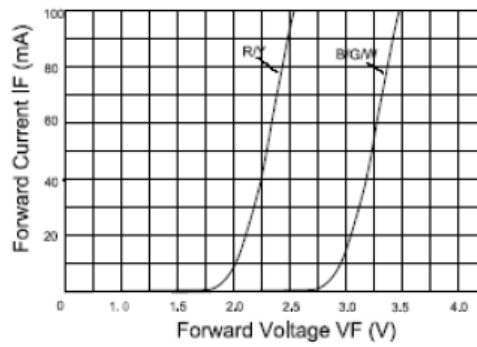
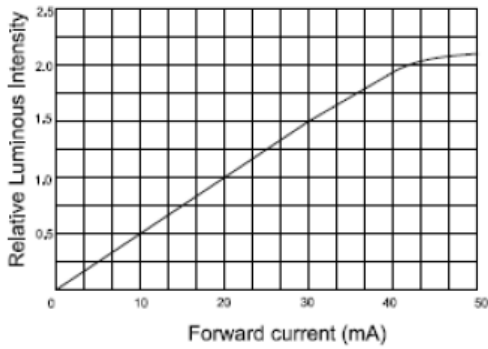
Parameter	Symbol	Absolute maximum Rating	Unit
Continuous Forward Current	I _F	30	mA
Peak Forward Current (1/10 Duty Cycle, 0.1ms Pulse Width)	I _{FP}	100	mA
Reverse Voltage	V _R	5	V
Power Dissipation	PD	60	mW
Operating Temperature Range	T _{opr}	-30 to +85	°C
Storage Temperature Range	T _{stg}	-40 to +100	°C
Lead Soldering Temperature [3mm From Body]	T _{sl}	260°C for 5Seconds	

Electrical Optical Characteristics at Ta=25

Parameter	Symbol	Test Condition	Min.	Type.	Max.	Unit
Forward Voltage	V _F	I _F = 20mA	1.9	---	2.3	V
Reverse Current	I _R	V _R = 5V	---	---	10	µA
Peak Wavelength	λ _P	---	565	----	575	NM
Luminous Intensity	I _V	I _F = 20mA	70	---	120	mcd
Viewing Angle	2θ _½	I _F = 20mA	40°	----	50°	deg

● Typical Electrical /Optical Characteristics Curves

(25°C Ambient Temperature Unless_ Otherwise Noted)



kwality

ISO 9001-2008

KWALITY PHOTONICS PRIVATE LIMITED

29, EC Kushaiguda, Hyderabad-50 062, INDIA. PH:91-040-27123555,27136252

Email: sales@kwalityindia.com www.kwalityindia.com